



# Prostate-specific membrane antigen PET-CT in patients with high-risk prostate cancer before curative-intent surgery or radiotherapy (proPSMA): a prospective, randomised, multi-centre study

Michael S Hofman, Nathan Lawrentschuk, Roslyn J Francis, Colin Tang, Ian Vela, Paul Thomas, Natalie Rutherford, Jarad M Martin, Mark Frydenberg, Ramdave Shaker, Lih-Ming Wong, Kim Taubman, Sze Ting Lee, Edward Hsiao, Paul Roach, Michelle Nottage, Ian Kirkwood, Dickon Hayne, Emma Link, Petra Marusic, Anetta Matera, Alan Herschtal, Amir Iravani, Rodney J Hicks, Scott Williams, Declan G Murphy, for the proPSMA Study Group Collaborators\*

## Summary

**Background** Conventional imaging using CT and bone scan has insufficient sensitivity when staging men with high-risk localised prostate cancer. We aimed to investigate whether novel imaging using prostate-specific membrane antigen (PSMA) PET-CT might improve accuracy and affect management.

**Methods** In this multicentre, two-arm, randomised study, we recruited men with biopsy-proven prostate cancer and high-risk features at ten hospitals in Australia. Patients were randomly assigned to conventional imaging with CT and bone scanning or gallium-68 PSMA-11 PET-CT. First-line imaging was done within 21 days following randomisation. Patients crossed over unless three or more distant metastases were identified. The primary outcome was accuracy of first-line imaging for identifying either pelvic nodal or distant-metastatic disease defined by the receiver-operating curve using a predefined reference-standard including histopathology, imaging, and biochemistry at 6-month follow-up. This trial is registered with the Australian New Zealand Clinical Trials Registry, ANZCTR12617000005358.

**Findings** From March 22, 2017 to Nov 02, 2018, 339 men were assessed for eligibility and 302 men were randomly assigned. 152 (50%) men were randomly assigned to conventional imaging and 150 (50%) to PSMA PET-CT. Of 295 (98%) men with follow-up, 87 (30%) had pelvic nodal or distant metastatic disease. PSMA PET-CT had a 27% (95% CI 23–31) greater accuracy than that of conventional imaging (92% [88–95] vs 65% [60–69];  $p < 0.0001$ ). We found a lower sensitivity (38% [24–52] vs 85% [74–96]) and specificity (91% [85–97] vs 98% [95–100]) for conventional imaging compared with PSMA PET-CT. Subgroup analyses also showed the superiority of PSMA PET-CT (area under the curve of the receiver operating characteristic curve 91% vs 59% [32% absolute difference; 28–35] for patients with pelvic nodal metastases, and 95% vs 74% [22% absolute difference; 18–26] for patients with distant metastases). First-line conventional imaging conferred management change less frequently (23 [15%] men [10–22] vs 41 [28%] men [21–36];  $p = 0.008$ ) and had more equivocal findings (23% [17–31] vs 7% [4–13]) than PSMA PET-CT did. Radiation exposure was 10.9 mSv (95% CI 9.8–12.0) higher for conventional imaging than for PSMA PET-CT (19.2 mSv vs 8.4 mSv;  $p < 0.001$ ). We found high reporter agreement for PSMA PET-CT ( $\kappa = 0.87$  for nodal and  $\kappa = 0.88$  for distant metastases). In patients who underwent second-line image, management change occurred in seven (5%) of 136 patients following conventional imaging, and in 39 (27%) of 146 following PSMA PET-CT.

**Interpretation** PSMA PET-CT is a suitable replacement for conventional imaging, providing superior accuracy, to the combined findings of CT and bone scanning.

**Funding** Movember and Prostate Cancer Foundation of Australia.

**Copyright** © 2020 Elsevier Ltd. All rights reserved.

## Introduction

Defining the extent of prostate cancer spread with imaging is important for therapeutic decision-making in patients with high-risk localised prostate cancer. Despite careful selection of patients before surgery or radiotherapy, relapse following treatment with curative intent is common<sup>1,2</sup>, partly because existing standard-of-care conventional imaging<sup>3,4</sup> with CT and bone scan has insufficient sensitivity and specificity to detect non-localised disease.<sup>5,6</sup> Novel

imaging might improve outcomes by more accurately defining disease extent at the outset, enabling a more tailored multimodal treatment plan to be proposed.

Prostate-specific membrane antigen (PSMA) is a cell-surface glycoprotein overexpressed on prostate cancer cells. Radiolabelled small molecules that bind with affinity to PSMA enable whole-body tumour-specific imaging with PET-CT. Emerging data suggest that PSMA PET-CT is an important advance for imaging prostate cancer, particularly

Published Online  
March 22, 2020  
[https://doi.org/10.1016/S0140-6736\(20\)30314-7](https://doi.org/10.1016/S0140-6736(20)30314-7)

See Online/Comment  
[https://doi.org/10.1016/S0140-6736\(20\)30527-4](https://doi.org/10.1016/S0140-6736(20)30527-4)

\*A complete list of members is provided in the appendix

**Molecular Imaging and Therapeutic Nuclear Medicine** (Prof M S Hofman MBBS, P Marusic BSc, A Iravani MD, Prof R J Hicks MBBS), **Centre for Biostatistics and Clinical Trials** (E Link DPhil, A Matera MSc, A Herschtal PhD), **Division of Radiation Oncology** (Prof S Williams MBBS), **Department of Cancer Surgery** (Prof D G Murphy MBBS), **Peter MacCallum Cancer Centre, Melbourne, VIC, Australia**; **Sir Peter MacCallum Department of Oncology** (Prof M S Hofman, N Lawrentschuk MBBS, E Link, A Iravani, Prof R J Hicks, Prof S Williams, Prof D G Murphy), **Department of Urology and Surgery, St Vincent's Health Melbourne (L-M Wong MBBS), University of Melbourne, Melbourne, VIC, Australia**; **Department of Surgery, Austin Health, Melbourne, VIC, Australia** (N Lawrentschuk); **Urological Society of Australia and New Zealand, NSW, Australia** (N Lawrentschuk); **Department of Nuclear Medicine, Sir Charles Gairdner Hospital, Perth, WA, Australia** (Roslyn J Francis MBBS); **University of Western Australia, Faculty of Health and Medical Sciences, Perth, WA, Australia** (Roslyn J Francis); **ARTnet, NSW, Australia** (Roslyn J Francis); **Department of Radiation Oncology, Sir Charles Gairdner**

Hospital, Perth (C Tang MBBS); Department of Urology, Princess Alexandra Hospital, Australian Prostate Cancer Research Centre-Queensland, Queensland University of Technology, Translational Research Institute, Brisbane, QLD, Australia (Ian Vela MBBS); Department of Nuclear Medicine, Royal Brisbane and Women's Hospital, Brisbane, QLD, Australia (P Thomas MBBS); Faculty of Medicine, University of Queensland, Brisbane, QLD, Australia (P Thomas); Department of Nuclear Medicine, Hunter New England Health, Newcastle, NSW, Australia (N Rutherford MD); School of Medicine and Public Health, University of Newcastle, Newcastle, NSW, Australia (J M Martin DMed); Department of Surgery, Monash University and Cabrini Institute, Cabrini Health, Melbourne, VIC, Australia (Prof M Frydenberg MBBS); Monash Health Imaging, Monash Health, Melbourne, VIC, Australia (R Shakher MBBS); Department of Medical Imaging, PET/CT and St Vincent's Private Radiology, St Vincent's Health, Melbourne, VIC, Australia (K Taubman MBBS); Department of Molecular Imaging and Therapy, Austin Health, Melbourne, VIC, Australia (S Ting Lee MBBS); University of Sydney, Department of Nuclear Medicine and PET, Royal North Shore Hospital, Sydney, NSW, Australia (E Hsiao MBBS); Clinical and Research Imaging Centre, South Australian Health and Medical Research Institute, Adelaide, SA, Australia (M Nottage MBBS); Dr Jones and Partners Medical Imaging, Adelaide, SA, Australia (M Nottage); Department of Nuclear Medicine and PET, Royal Adelaide Hospital, Adelaide, SA, Australia (I Kirkwood MBBS); Faculty of Health and Medical Sciences, University of Adelaide, Adelaide, SA, Australia (I Kirkwood); UWA Medical School, University of Western Australia, Perth, WA, Australia (Prof D Hayne MBBS); and Australian and New Zealand Urogenital and Prostate

## Research in context

### Evidence before this study

We searched PubMed and MEDLINE for peer-reviewed, original studies published in English until Feb 22, 2017, using the search terms "PSMA", "Prostate Specific Membrane Antigen", "positron emission tomography", and "PET". We also reviewed key journals and congress abstracts in the fields of nuclear medicine and urologic oncology. We found data suggesting that prostate-specific membrane antigen (PSMA) PET-CT is an important advance for imaging prostate cancer, particularly in the setting of recurrent cancer. Data were limited by retrospective or single-centre design, without comparison with a reference standard or conventional imaging. No prospective or randomised data for primary staging were available. Therefore, we designed a phase 3 imaging trial to investigate the utility of this novel modality. Several studies have been published after the proPSMA study commenced, but high-quality, prospectively collected data comparing PSMA PET-CT with conventional imaging do not exist to date.

in the setting of recurrent cancer.<sup>7–11</sup> For primary staging, evidence is limited by retrospective or single-centre study design, without comparison with conventional imaging.<sup>12–15</sup> Furthermore, a paucity of data exists with follow-up or comparison with a reference standard.

The proPSMA trial aimed to investigate whether PSMA PET-CT had improved accuracy when compared with the combination of CT and bone scan. We explored the diagnostic utility of PSMA PET-CT as a replacement for conventional imaging.

A video abstract is available online.

## Methods

### Study design and participants

We did a multicentre, two-arm, randomised trial at ten centres in Australia (appendix p 4). We recruited men, aged at least 18 years. Patients were eligible if they had histopathologically-confirmed prostate cancer and were being considered for radical prostatectomy or radiotherapy with curative intent. All patients had high-risk features including at least one of either a prostate-specific antigen (PSA) concentration of 20 ng/mL or more within 12 weeks before randomisation, International Society of Urothology (ISUP) grade group 3–5, or clinical stage T3 or worse. Exclusion criteria included any imaging done for staging within 8 weeks before randomisation, with the exception of MRI of the prostate before biopsy (appendix p 10).

The study protocol was carried out in accordance with the Declaration of Helsinki and Good Clinical Practice, and all patients gave written informed consent before study entry.

The trial was approved by the institutional ethics board at each participating site. The protocol was reviewed by the scientific committees of the Australasian

### Added value of this study

This randomised phase 3 study provides compelling evidence that PSMA PET-CT has better accuracy, with consequent management change, fewer equivocal results, and lower radiation exposure compared with current standard-of-care imaging with CT and bone scanning in men with newly-diagnosed prostate cancer.

### Implications of all the available evidence

Collective data from this prospective imaging study and other series provides data that PSMA PET-CT is better than and can replace conventional imaging with CT and bone scan for staging men with high-risk prostate cancer before surgery or radiotherapy with curative intent. Existing guidelines should be reviewed in light of these findings. Further health-economic analyses are required to support potential reimbursement to enable widespread access to PSMA PET-CT for men.

Radiopharmaceutical Trials Network and the Australian and New Zealand Urogenital and Prostate Cancer Trials Group. The trial protocol has been previously published (appendix p 32).<sup>16</sup>

### Randomisation and masking

Men were randomly assigned (1:1) ratio to either conventional imaging or PSMA PET-CT. Block randomisation was stratified by centre and occurred only after eligibility was confirmed. Enrolment was competitive and each site enrolled patients until the total targeted number was reached. Participants were recruited by urologists and radiation oncologists, most of whom were further involved with the trial. We used a web-based system for data collection and randomisation.

### Procedures

Patients who were randomised to the control group underwent first-line imaging consisting of abdomen and pelvis CT with intravenous contrast, and technetium-99m bone whole-body planar imaging with single-photon-emission CT (SPECT) CT of the chest to pelvis. Conventional imaging was defined by the combined findings of CT and bone scanning. Patients randomised to the experimental group underwent gallium-68 (<sup>68</sup>Ga) PSMA-11 PET-CT using a standardised protocol defining minimum specifications for radiopharmaceutical production, quality control, and PET-CT acquisition (appendix p 10). First-line imaging was done within 21 days following randomisation. Men further underwent second-line cross-over imaging within 14 days unless three or more unequivocal distant metastases were identified on first-line imaging. This selective cross-over was chosen to minimise futile imaging because the identification of additional sites of disease in patients with widespread

metastatic disease is not likely to provide patient benefit. Imaging was interpreted by experienced radiologists and nuclear medicine specialists, some of whom were further involved with the trial. Results of first-line imaging were available when reporting second-line imaging.

Following second-line imaging, additional confirmatory studies done at the discretion of the treating doctor were recorded. For patients with distant metastases, when feasible, biopsy confirmation of disease was strongly encouraged in the clinical protocol. Patients who had surgery underwent pelvic lymph node dissection at the discretion of the treating urologist. At 6 months (plus or minus 30 days) men underwent repeat imaging as per randomised group with cross-over if imaging evidence of N1 or M1 disease at baseline was found, or if we found biochemical or clinical suspicion of residual or recurrent disease.

## Outcomes

The primary outcome of the trial was accuracy of first-line imaging for identifying either pelvic nodal or distant-metastatic disease. The accuracy of both diagnostic instruments was assessed by the area under the curve (AUC) of the receiver operating characteristic curve. The AUC was calculated as the mean of the estimated sensitivity and specificity. The reference standard regarding the presence of pelvic nodal or distant metastases was determined by each site's principal investigator at 6 months (plus or minus 30 days) after randomisation using a predefined composite panel encompassing histopathologic, imaging, clinical, and biochemical findings. Cases were considered positive if one of the following hard criteria were met: histopathology showing prostate adenocarcinoma, or change of a bone lesion to sclerotic or blastic on follow-up imaging. Cases were also considered positive if at least three soft criteria were met (appendix p 11). These included (1) typical appearance of multi-focal metastatic disease; (2) a metastatic lesion on an imaging modality other than the one done as the index scan; (3) increase in size or number of lesions from one imaging exam to the next; (4) decrease in size or number of lesions from one imaging exam to the next, following appropriate treatment; (5) lesion associated with clinical symptoms suggesting malignancy; (6) patient received localised treatment for imaging finding; (7) increase in PSA in keeping with clinical scenario of progression, or decrease in response to treatment; and (8) unequivocal persistence of positive finding on repeating imaging at 6 months in patients with a PSA concentration of more than 0.2 ng/mL at least 3 weeks following prostatectomy. The reference-standard was defined separately for pelvic nodal and distant metastases.<sup>17</sup> All available imaging and follow-up including second-line imaging, if done, was used to define hard and soft criteria.

The protocol did not specify treatment for patients, although any change in patient management as a result

of the imaging results was recorded prospectively using a referrer-reported questionnaire. Management decisions were considered in the setting of support from multi-disciplinary genitourinary oncology teams in participating academic centres. At baseline, this management questionnaire result was obtained before randomisation and knowledge of the assigned diagnostic group. The questionnaire was repeated following first-line and second-line imaging. Management change was defined by a change in treatment intent (eg, curative to palliative), addition or removal of a treatment modality, or change in surgery or radiotherapy technique (appendix p 12). Change was classified as high (change in management intent or modality), medium (change in modality delivery), low (management plan was not altered), or potential effect ignored (management plan not altered despite findings showing distant metastatic disease).

Incremental accuracy of second-line imaging was defined by the ability to change stage of regional nodal or distant metastatic disease. Incremental management effect of second-line imaging was also recorded using the same definitions as first-line imaging.

The effective radiation exposure in millisieverts (mSv) from first-line imaging was calculated for each imaging study from the dose-length product for CT and administered radioactivity of radioisotopes.

Any adverse events of <sup>68</sup>Ga-PSMA-11 administration were recorded. Data related to service delivery and use were also recorded to assess the costs associated with PSMA PET-CT, which will be reported separately.

All sites were certified by an independent review before site activation involving PET scanner validation<sup>18</sup> and radiopharmaceutical production (appendix p 10).

During the study, PSMA PET-CT images were reviewed by a central imaging laboratory of expert readers. Reporter agreement between local and central review was recorded according to the American Joint Committee on Cancer staging system for nodal (N0, N? [equivocal] or N1) and distant metastases (M0, M? [equivocal], M1a, M1b or M1c). In the event of disagreement, the final result was at the discretion of the local reviewer.

De-identified source documentation of the first five patients from each site and a random selection of 10% thereafter were reviewed for accuracy 77 (25%) of 302 of patients were reviewed. 5% of patients had recorded protocol deviations which were mostly minor without influence on the analyses (appendix p 14).

## Statistical analysis

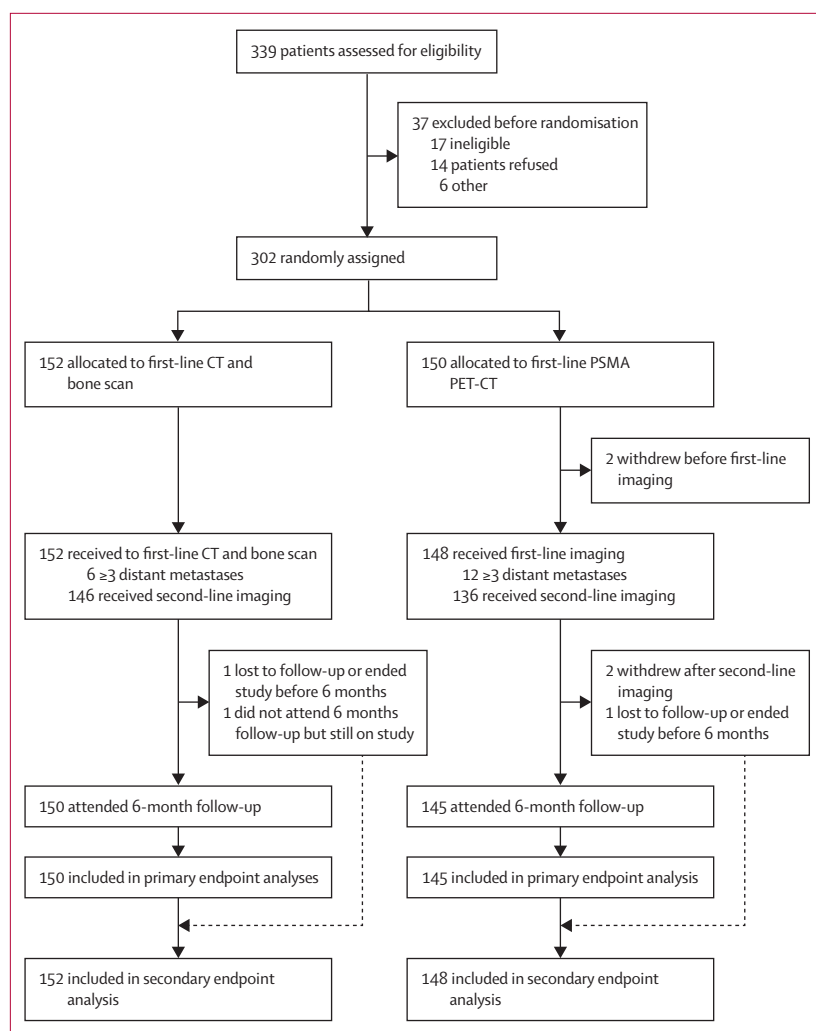
We calculated that a sample size of 300 patients (150 per group) would achieve a power of 0.85 using the following pragmatic assumptions: (1) conventional imaging has a true underlying AUC of 0.65, consisting of a sensitivity of 0.65 and a specificity of 0.65; (2) PSMA PET-CT has a true underlying AUC of 0.9, consisting of a sensitivity of 0.9 and a specificity of 0.9; (3) the proportion of patients

Cancer Trials Group, NSW, Australia (Prof S Williams)

Correspondence to:  
Prof Michael S Hofman,  
Molecular Imaging and  
Therapeutic Nuclear Medicine,  
Peter MacCallum Cancer Centre,  
Melbourne, VIC 3000, Australia  
michael.hofman@petermac.org

See Online for appendix

See Online for video



**Figure 1: Trial profile**

PSMA=prostate-specific membrane antigen.

with pelvic nodal or distant metastatic disease is 25%; (4) a margin of 10% improvement (absolute) in AUC is required to declare PSMA PET-CT superior; (5) a two-sided type I error of 10%; and (6) allow for a 10% patient dropout. The initial sample of 200 patients was based on an estimated proportion of cases of 40%. This proportion was subsequently revised to 25% after study commencement on the basis of trial management committee discussions without review of study data and availability of funding enabling study expansion. No interim analysis was done. The statistical analysis plan was prespecified and approved by the trial management committee. All statistical analyses were done in SAS (version 9.4). Data preparation was completed in R (version 3.6.0). The main analysis was done by the study biostatistician and the report was reviewed by a second independent biostatistician.

For the primary endpoint, all participants who underwent the first-line imaging to which they were assigned

	All patients (n=300)	Conventional imaging (n=152)	PSMA PET-CT imaging (n=148)
<b>Age, years</b>			
Median (IQR)	69.0 (63.0–73.5)	68.0 (62.5–72.0)	70.0 (64.0–74.0)
<b>PSA, ng/mL</b>			
Mean (SD)	17.3 (36.6)	16.3 (17.7)	18.3 (49.0)
Median (IQR)	10.2 (6.6, 17.1)	10.5 (6.5, 20.0)	10.0 (6.9, 14.1)
≥20	65 (21.7%)	39 (25.7%)	26 (17.6%)
<b>Clinical stage</b>			
≥T3	82 (27%)	39 (26%)	43 (29%)
<b>ISUP grade group</b>			
1	1 (<1%)	1 (<1%)	0
2	6 (2%)	2 (1%)	4 (3%)
3	101 (34%)	47 (31%)	54 (36%)
4	61 (20%)	33 (22%)	28 (19%)
5	131 (44%)	69 (45%)	62 (42%)
<b>ISUP grade group ≥3</b>			
No	7 (2%)	3 (2%)	4 (3%)
Yes	293 (98%)	149 (98%)	144 (97%)

Data are n (%), unless otherwise specified. PSMA=prostate-specific membrane antigen. PSA=prostate-specific antigen. ISUP=International Society of Urothology.

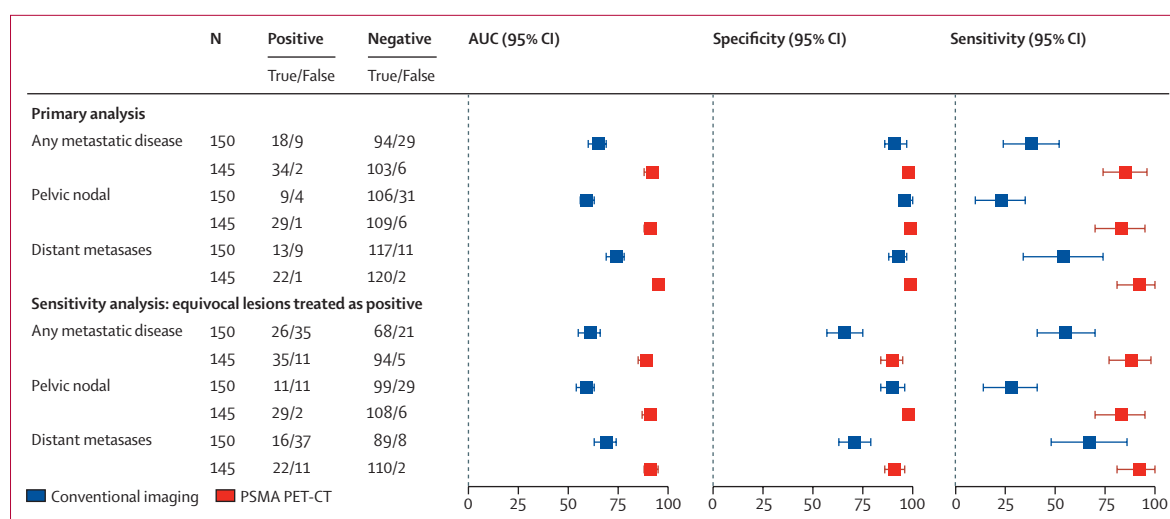
**Table: Baseline characteristics**

were included in the analysis. If the reference standard could not be determined because of incomplete follow-up data, the patient was deemed an incomplete patient and excluded from the primary endpoint analysis. For the purpose of estimating sensitivity and specificity, lesions rated as equivocal were considered negative for metastatic disease. The primary analysis was a patient-level analysis, with the presence of any pelvic nodal or distant metastasis in a patient considered positive for metastatic disease. The AUC was calculated as the mean of the estimated sensitivity and specificity. We reported the difference in AUC between the groups and the p-value for the null hypothesis that the AUC for PSMA PET-CT is 10% greater (absolutely) than the AUC in the conventional imaging group.

The analyses of the primary objective were repeated to define sensitivity, specificity, and accuracy for nodal and distant metastatic groups separately. A sensitivity analysis was also done in which lesions that were rated as equivocal were considered positive for metastatic disease.

For secondary outcomes, the proportion of patients with management effect and equivocal findings were compared using Fisher's exact test. Radiation exposure was compared using Student's unpaired t-test. Reporter agreement between local and central readers were assessed using Cohen's weighted  $\kappa$ . To assess the incremental accuracy of second-line imaging, the proportion of patients who were upstaged by identification of nodal or distant metastases was calculated; the





**Figure 2: Accuracy, sensitivity, and specificity of conventional imaging compared with PSMA PET-CT**  
PSMA=prostate-specific membrane antigen. AUC=area under the curve.

number of patients who were accurately or inaccurately upstaged using the 6-month reference standard was also calculated.

This trial was registered with the Australian New Zealand Clinical Trials Registry, ACTRN12617000005358.

### Role of the funding source

The funder of the study had no role in study design, data collection, data analysis, data interpretation, or writing of the report. The corresponding author had full access to all the data in the study and had final responsibility for the decision to submit for publication.

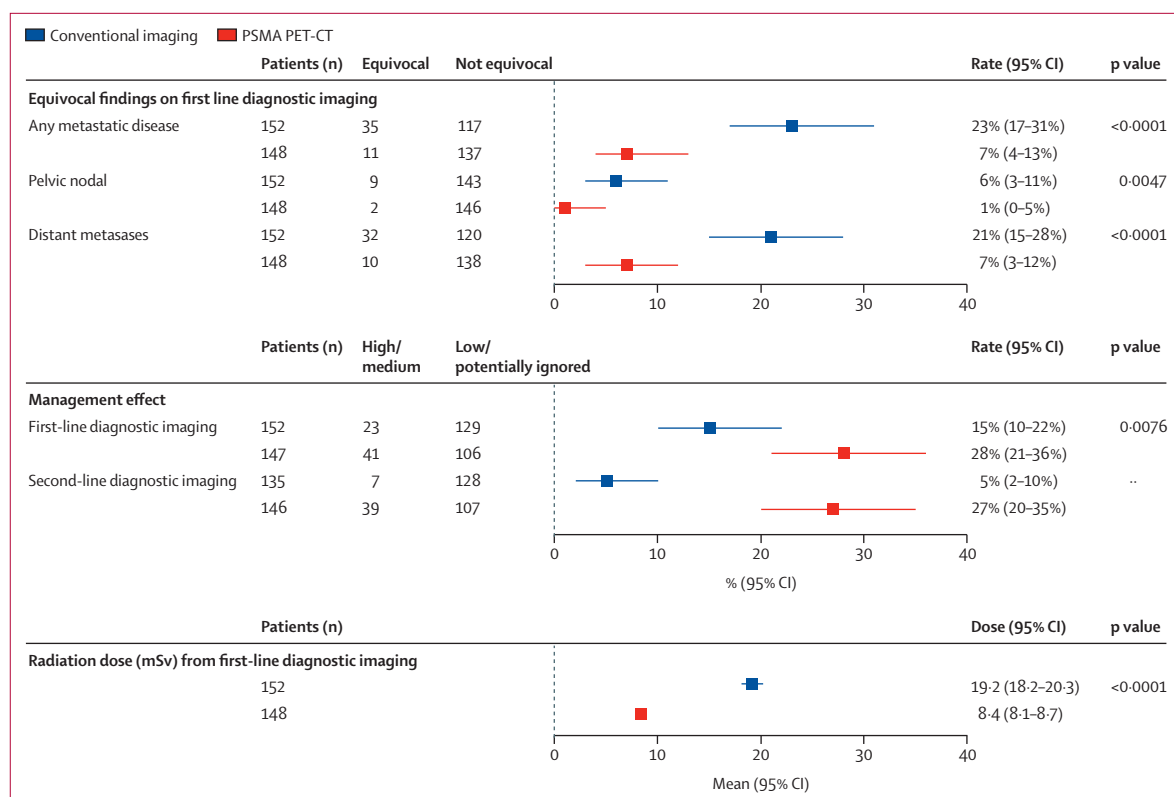
### Results

From March 22, 2017 to Nov 02, 2018, 302 participants were randomly assigned at ten sites (figure 1; appendix pp 7, 16). Two patients withdrew before first-line imaging and were replaced. 300 patients received first-line imaging according to their randomly assigned group. Baseline characteristics were similar in the two groups (table; appendix p 16). The median age of participants was 68·1 years (IQR 63·0–73·5). 293 (98%) men fulfilled eligibility on the basis of having a tumour of ISUP grade group 3 or more, 65 (22%) with PSA concentration of 20 ng/mL or more, and 82 (27%) men with clinical stage T3–4. 146 (96%) men randomly assigned to conventional imaging underwent second-line PSMA PET-CT imaging, and 136 (92%) patients randomly assigned to PSMA PET-CT underwent second-line conventional imaging (appendix pp 17–24). Reference standard was assessable in 295 (98%) men (appendix p 26), with 87 (30%) positive for nodal or distant metastases. Repeat imaging that enabled assessment of temporal change at 6 months was done in 124 (41%) men. Pelvic lymph-node sampling was done in 83 (66%) of 126 men who underwent prostatectomy. The reference standard was defined by

hard criteria in 20 (23%) of 87 men with nodal or distant metastases.

PSMA PET-CT had a 27% (95% CI 23–31,  $p<0\cdot0001$ ) absolute greater AUC for accuracy than conventional imaging did (92% [88–95] vs 65% [60–69]; figure 2; appendix p 27). This finding reflected a lower sensitivity (38% [24–52] vs 85% [74–96]) and specificity (91% [85–97] vs 98% [95–100]) for conventional imaging compared with that of PSMA PET-CT. A sensitivity analysis was done, in which lesions rated as equivocal were considered positive rather than negative, also showed the superiority of PSMA PET-CT (28% absolute greater AUC [23–33]; AUC 89% [85–92] vs 61% [55–66]; appendix p 28). Results for subgroups of patients with pelvic nodal (AUC 91% vs 59% [32% absolute difference; 28–35]) and distant (95% vs 74% [22% absolute difference; 18–26]) metastases also showed superiority of PSMA PET-CT (appendix p 30). First-line PSMA PET-CT detected pelvic nodal disease in 30 (20%) of 148 men, abdominal nodal metastases in 13 (9%), bone metastases in 15 (10%), and visceral metastases in one (1%; appendix p 8). In a further post-hoc analysis, the AUCs for the analyses of subgroups of men with Gleason grade group 4 disease or higher were 25% (20–30) greater, 37% (31–42) greater for those with grade group 3 or lower, and 36% (28–44) greater for those with a PSA concentration of 20 ng/mL or more; all of which were superior for PSMA PET-CT with (appendix p 39).

More equivocal findings for identifying any metastatic disease were seen with conventional imaging compared with PSMA PET-CT (35 men [23%; 95% CI 17–31] vs 11 men [7%; 4–13];  $p<0\cdot001$ ). Findings were similar for men with pelvic nodal (nine men [6%; 3–11] vs one [1%; 0–5%]) and distant metastases (32 men [21%; 15–28] vs 10 men [7%; 3–12]; figure 3, appendix p 30).



**Figure 3: Equivocal findings, management effect, and radiation exposure of conventional imaging compared with PSMA PET-CT**  
PSMA=prostate-specific membrane antigen.

Conventional imaging conferred management change with a high or medium effect (change in management intent or modality, or change in modality delivery) in 23 men (15%; 95% CI 10–22), compared with 41 men (28%; 21–36) who underwent first-line PSMA PET-CT ( $p=0.008$ ; figure 3; appendix pp 30, 31). Following first-line PSMA PET-CT, 20 (14%) of 148 patients were directed from curative to palliative-intent treatment, 11 (7%) had a change in radiotherapy technique, and 11 (7%) in surgical technique.

Radiation exposure from first line diagnostic imaging was 10.9 mSv (95% CI 9.8–12.0;  $p<0.001$ ) higher with conventional imaging compared with PSMA PET-CT (19.2 mSv [18.2–20.3] vs 8.4 mSv [8.1–8.7]; figure 3; appendix pp 9, 32, 33).

In 291 selected patients with fewer than three distant metastases who crossed over to second-line imaging, conventional imaging had a high or medium effect in 5% (95% CI 2–10) compared with 27% (20–35) with PSMA PET-CT (figure 3; appendix pp 33, 34). After second-line imaging, conventional imaging findings resulted in a change of stage for nodal or distant metastases in 20 men (14% [95% CI 9–22]), compared with 33 men (22% [16–30]) for PSMA PET-CT findings. Compared with the reference standard, the change in stage was correct in three men (2% [0–6]) for conventional imaging, compared with 26 men (18% [12–25]) for PSMA

PET-CT (appendix p 35). In a post-hoc analysis of the second-line imaging subpopulations, the AUC of accuracy was 17% (13–22) higher for second-line PSMA PET-CT compared with that of second-line conventional imaging (84% [80–88] vs 67% [62–71]; appendix p 36).

Final implemented management included surgery in 126 (42%), radiotherapy in 122 (41%), androgen deprivation therapy alone in 26 (9%), and androgen deprivation therapy combined with chemotherapy in 19 (6%) men (appendix p 36).

Reporter agreement was high with PSMA PET-CT for nodal ( $\kappa=0.87$  [95% CI 0.81–0.94]) and distant disease (0.88 [0.84–0.92]; appendix p 37). No adverse events to  $^{68}\text{Ga}$ -PSMA-11 were reported.

## Discussion

We found that PSMA PET-CT had a superior diagnostic accuracy than conventional imaging did in men with high-risk prostate cancer. This finding is supported by results from retrospective single-centre studies that have suggested that PSMA PET-CT might have a higher accuracy than that of CT or MRI in the staging of pelvic lymph nodes before prostatectomy, using histopathology as the standard-of-reference.<sup>12,20</sup> In one study involving 130 patients with intermediate-to-high-risk prostate cancer, PSMA PET-CT outperformed CT or MRI, with a diagnostic accuracy of 0.83 (95% CI 0.76–0.91) versus

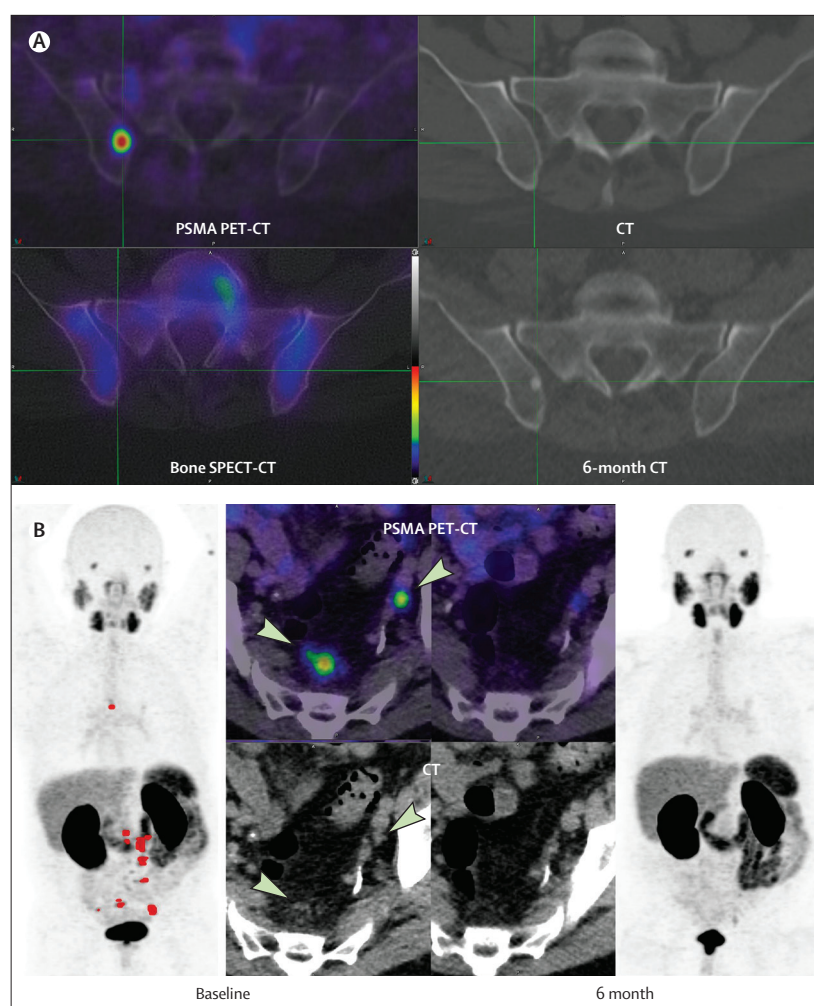
0·69 (0·59–0·79).<sup>12,20</sup> Consistent with previous retrospective reports, the proPSMA study showed the diagnostic superiority of PSMA PET-CT compared with CT. By contrast with previous studies, the superiority was found not only for CT but also for bone scan with SPECT-CT, enabling comparison of regional nodal and distant metastases.

A cohort of men exists with apparently localised prostate cancer, who are at high risk of developing recurrence despite receiving timely and effective primary therapy. Regardless of whether or not these men undergo surgery or radiotherapy as primary treatment, up to 50% have biochemical recurrence, with a subsequently increased risk of metastases and 15-year prostate cancer-specific mortality rates of up to 35%.<sup>11,19</sup> A key reason for these high failure rates is that conventional imaging does not detect metastatic disease *ab initio* and local treatment is therefore destined to be ineffective. Accordingly, improved staging might enable better tailored treatments and improve outcomes in these high-risk men.

The primary role of any diagnostic imaging test is to provide accurate results.<sup>21</sup> Accordingly, we selected accuracy as the primary endpoint and showed unequivocal superiority of PSMA PET-CT compared with conventional imaging. This finding is attributed to the high tumour-to-background contrast and specificity of the radiotracer and consequent ability to identify small-volume nodal or visceral disease and early bone metastases before lytic or osteoblastic change (figure 4), which led to fewer equivocal findings compared with conventional imaging and high reporter agreement.

Key strengths of our study include the multi-centre design, with the assessment of first-line and second-line utility of PSMA PET-CT. Many imaging studies have assessed the additional value of a new modality after standard-of-care imaging has been done. Our key findings indicate that PSMA PET-CT is a suitable replacement for conventional imaging and that conventional imaging is not required following PSMA PET-CT. Although patients underwent selective cross-over to assess utility for second-line imaging, the primary endpoint was head-to-head comparison of first-line imaging before cross-over. Limitations of our second-line imaging analysis include the fact that the analysis was of a subset of patients and was not a randomised comparison. The trial included robust quality-control measures and recruited ahead of schedule. Although many potential confounders were managed through randomisation, the inability to blind imaging modality introduced potential bias.

Discovering the ground truth in a diagnostic imaging study is always subject to bias. Reflecting real-world practice, histopathologic assessment was not feasible in all participants, especially those with pelvic nodal metastases who underwent radiotherapy. Moreover, relying on histopathology alone is subject to sampling error and, arguably, our reference standard incorporating 6-month follow-up with repeat imaging is a more robust method



**Figure 4: Images of two men with normal results from baseline conventional imaging**  
(A) PSMA PET-CT showed a right iliac bone metastasis in the first patient and 6-month follow-up imaging following systemic treatment showed regression of PSMA PET-CT findings with progressive sclerosis on CT.  
(B) PSMA PET-CT showed multiple sub-cm pelvic and distant nodal metastases in the second patient and 6-month follow-up imaging following systemic treatment showed regression of PSMA PET-CT findings with a decrease in the size of nodal changes on CT. Furthermore, prostate-specific antigen was undetectable in both patients at 6 months' follow-up. PSMA=prostate-specific membrane antigen.

in many patients. Our method enabled robust assessment of temporal changes with progression or regression of findings contributing to the reference standard. Nevertheless, some caution is warranted because our soft criteria were not conventional and might be subject to investigator bias.

Although we report that PSMA PET-CT led to changes in intended management, the cross-over design limited our ability to identify specific improvements in downstream patient outcomes between the groups. Our study design focused on the comparative accuracy of PSMA PET-CT compared with conventional imaging and we cannot ascertain whether the information provided by PSMA PET-CT and any consequent management effects translate to improved patient survival. Nevertheless, we contend that assessing survival or other

long-term outcomes are challenging for imaging studies. Improving accuracy is desirable because the detection of metastatic disease can prevent futile attempts at cure or better direct locoregional therapies. Furthermore, earlier detection of systemic metastases could also benefit patients because the efficacy of therapies is greater when the burden of disease is low.<sup>22</sup> Additionally, the rate of equivocal imaging findings and radiation exposure are relevant patient outcomes that were assessed in this study.

We did not mandate the management of patients in this study. The decision, for example, to perform a pelvic lymph-node dissection was at the discretion of individual surgeons. Other series incorporating extended pelvic lymph-node dissection have reported lower sensitivity than we found for PSMA PET-CT for detecting nodal metastases.<sup>23</sup> Although the patient populations were different, our study might have overestimated the sensitivity of PSMA PET-CT given the absence of pelvic lymph-node dissection in all patients. Nevertheless, despite this limitation, our study provides robust comparative data, given the randomised design. Furthermore, the proPSMA cohort of men without distant metastases on PSMA PET-CT remain on protocol-defined follow-up to ascertain clinical treatment failure over time, which will be assessed after 54 months' follow-up.

PSMA PET-CT reveals disease beyond the classic pelvic lymph-node dissection or radiotherapy treatment field in 16–48% of cases.<sup>15,24</sup> Inadequate coverage is often seen with pararectal, inguinal, and presacral nodes, notwithstanding synchronous distant metastases never within treatment fields.<sup>25</sup> Identification and early treatment of oligometastases is another strategy that warrants further assessment.<sup>26,27</sup> Also, lymph-node dissection that is PSMA-targeted using radioguided surgery techniques might further enhance the value of pelvic lymph-node dissection.<sup>28–30</sup>

The cost of diagnostic imaging is increasingly recognised as a major component of health expenditure. Cost savings with PSMA PET-CT include not only the implications of a more accurate test but also the savings from a single rather than multiple imaging tests, from a patient and health-care perspective. The cost of PSMA PET-CT varies considerably by geographical region and further health-economic analyses are required.

In conclusion, in men with high-risk prostate cancer undergoing staging before curative-intent therapy, we found that a diagnostic pathway that used PSMA PET-CT as a first-line investigation as a replacement for conventional CT and bone scan was superior.

#### Contributors

MSH, RJF, AH, SW, and DGM designed the study. MSH, NL, RJF, CT, IV, PT, NR, JMM, MF, RS, L-MW, KT, STL, HS, PR, MN, IK, DH, PM, AM, SW, and DGM accrued patients and collected data. AI, RJH, and MSH did the imaging central review. EL and AH contributed to the statistical analysis. MSH was the coordinating principal investigator. All authors contributed to writing and approval of this report.

#### Declaration of interests

MSH reports grants from Prostate Cancer Foundation of Australia, Movember, and the Peter MacCallum Foundation, during the conduct of the study; other grants from Prostate Cancer Foundation, US Department of Defense, and Victorian Cancer Agency; personal fees and non-financial support from Ipsen, Sanofi Genzyme, and Janssen, outside of the submitted work. PT reports grants from Prostate Cancer Foundation of Australia, during the conduct of the study. JMM reports grants from Mundipharma, and personal fees from Janssen and Ferring, outside of the submitted work. RJH reports stockholding from Telix Pharmaceuticals, outside of the submitted work. DGM reports personal fees from Astellas, Janssen, Bayer, Ferring, and Ipsen, outside of the submitted work. All other authors declare no competing interests.

#### Data sharing

Requests for specific analyses or data will be considered by the proPSMA trial management committee immediately following publication of the manuscript for researchers who provide a methodologically sound proposal. Data include (1) access to all of the individual participant data collected during the trial, after de-identification; and (2) the study protocol, statistical analysis plan, and analytic code. Proposal should be directed to michael.hofman@petermac.org. To gain access, data requestors will sign a data access agreement.

#### Acknowledgments

We thank the participants who volunteered to take part in this trial and the trial teams that cared for them, the investigators for their contribution, the Centre for Biostatistics and Clinical Trials and core imaging laboratory at the Peter MacCallum Cancer Centre for coordination of the trial, and the trial management committee for oversight of the trial. We additionally thank the following groups who contributed to the grant application or were involved in the running of this clinical trial: Australasian Radiopharmaceutical Trials Network, Australian and New Zealand Urogenital and Prostate Cancer Trials Group, Centre for Health Economics Research and Evaluation (University of Technology Sydney, Sydney, NSW, Australia), Urological Society of Australia and New Zealand, and the Trans Tasman Radiation Oncology Group Cancer Research Group. We would also like to acknowledge our consumer representative, Mark Sibree. MSH would like to acknowledge the support from a Clinical Fellowship Award from the Peter MacCallum Foundation.

#### References

- 1 Zumsteg ZS, Spratt DE, Romesser PB, et al. The natural history and predictors of outcome following biochemical relapse in the dose escalation era for prostate cancer patients undergoing definitive external beam radiotherapy. *Eur Urol* 2015; **67**: 1009–16.
- 2 Eggener SE, Scardino PT, Walsh PC, et al. Predicting 15-year prostate cancer specific mortality after radical prostatectomy. *J Urol* 2011; **185**: 869–75.
- 3 Mohler JL, Antonarakis ES, Armstrong AJ, et al. Prostate cancer, version 2.2019, NCCN clinical practice guidelines in oncology. *J Natl Compr Canc Netw* 2019; **17**: 479–505.
- 4 Motter N, van den Bergh RCN, Briers E, et al. EAU guidelines: prostate cancer. Uroweb. <https://uroweb.org/guideline/prostate-cancer/> (accessed Jan 12, 2020).
- 5 Briganti A, Abdollah F, Nini A, et al. Performance characteristics of computed tomography in detecting lymph node metastases in contemporary patients with prostate cancer treated with extended pelvic lymph node dissection. *Eur Urol* 2012; **61**: 1132–38.
- 6 Abuzalouf S, Dayes I, Lukka H. Baseline staging of newly diagnosed prostate cancer: a summary of the literature. *J Urol* 2004; **171**: 2122–27.
- 7 Fendler WP, Calais J, Eiber M, et al. Assessment of 68Ga-PSMA-11 PET accuracy in localizing recurrent prostate cancer: a prospective single-arm clinical trial. *JAMA Oncol* 2019; published online March 28. DOI:10.1001/jamaoncol.2019.0096.
- 8 Perera M, Papa N, Roberts M, et al. Gallium-68 prostate-specific membrane antigen positron emission tomography in advanced prostate cancer-updated diagnostic utility, sensitivity, specificity, and distribution of prostate-specific membrane antigen-avid lesions: a systematic review and meta-analysis. *Eur Urol* 2019; published online Feb 14. DOI:10.1016/j.eururo.2019.01.049.



- 9 Afshar-Oromieh A, Holland-Letz T, Giesel FL, et al. Diagnostic performance of Ga-PSMA-11 (HBED-CC) PET/CT in patients with recurrent prostate cancer: evaluation in 1007 patients. *Eur J Nucl Med Mol Imaging* 2017; **44**: 1258–68.
- 10 Roach PJ, Francis R, Emmett L, et al. The Impact of Ga-PSMA PET/CT on management intent in prostate cancer: results of an Australian prospective multicenter study. *J Nucl Med* 2018; **59**: 82–88.
- 11 Calais J, Ceci F, Eiber M, et al. 18F-fluciclovine PET-CT and 68Ga-PSMA-11 PET-CT in patients with early biochemical recurrence after prostatectomy: a prospective, single-centre, single-arm, comparative imaging trial. *Lancet Oncol* 2019; **20**: 1286–94.
- 12 Maurer T, Gschwend JE, Rauscher I, et al. Diagnostic efficacy of (68)gallium-PSMA positron emission tomography compared to conventional imaging for lymph node staging of 130 consecutive patients with intermediate to high risk prostate cancer. *J Urol* 2016; **195**: 1436–43.
- 13 van Leeuwen PJ, Emmett L, Ho B, et al. Prospective evaluation of 68gallium-prostate-specific membrane antigen positron emission tomography/computed tomography for preoperative lymph node staging in prostate cancer. *BJU Int* 2017; **119**: 209–15.
- 14 Ferraro DA, Garcia Schüler HI, Muehlethaler UJ, et al. Impact of Ga-PSMA-11 PET staging on clinical decision-making in patients with intermediate or high-risk prostate cancer. *Eur J Nucl Med Mol Imaging* 2019; published online Dec 4. DOI:10.1007/s00259-019-04568-1.
- 15 Yaxley JW, Raveenthiran S, Nouhaud F-X, et al. Risk of metastatic disease on gallium-prostate-specific membrane antigen positron emission tomography/computed tomography scan for primary staging of 1253 men at the diagnosis of prostate cancer. *BJU Int* 2019; **124**: 401–07.
- 16 Hofman MS, Murphy DG, Williams SG, et al. A prospective randomized multicentre study of the impact of gallium-68 prostate-specific membrane antigen (PSMA) PET/CT imaging for staging high-risk prostate cancer prior to curative-intent surgery or radiotherapy (proPSMA study): clinical trial protocol. *BJU Int* 2018; **122**: 783–93.
- 17 Buyyounouski MK, Choyke PL, McKenney JK, et al. Prostate cancer—major changes in the American Joint Committee on Cancer eighth edition cancer staging manual. *CA Cancer J Clin* 2017; **67**: 245–53.
- 18 Bailey DL, Hofman MS, Forwood NJ, et al. Accuracy of dose calibrators for 68Ga PET imaging: unexpected findings in a multicenter clinical pretrial assessment. *J Nucl Med* 2018; **59**: 636–38.
- 19 Rider JR, Sandin F, Andrén O, Wiklund P, Hugosson J, Stattin P. Long-term outcomes among noncuratively treated men according to prostate cancer risk category in a nationwide, population-based study. *Eur Urol* 2013; **63**: 88–96.
- 20 Herlemann A, Wenter V, Kretschmer A, et al. Ga-PSMA positron emission tomography/computed tomography provides accurate staging of lymph node regions prior to lymph node dissection in patients with prostate cancer. *Eur Urol* 2016; **70**: 553–57.
- 21 Cohen JF, Korevaar DA, Altman DG, et al. STARD 2015 guidelines for reporting diagnostic accuracy studies: explanation and elaboration. *BMJ Open* 2016; **6**: e012799.
- 22 Parker CC, James ND, Brawley CD, et al. Radiotherapy to the primary tumour for newly diagnosed, metastatic prostate cancer (STAMPEDE): a randomised controlled phase 3 trial. *Lancet* 2018; **392**: 2353–66.
- 23 van Kalmthout LWM, van Melick HHE, Lavalaye J, et al. Prospective validation of gallium-68 PSMA-PET/CT in primary staging of prostate cancer patients. *J Urol* 2019; published online Sept 6. DOI:10.1097/JU.0000000000000531.
- 24 Calais J, Kishan AU, Cao M, et al. Potential Impact of Ga-PSMA-11 PET/CT on the planning of definitive radiation therapy for prostate cancer. *J Nucl Med* 2018; **59**: 1714–21.
- 25 Schiller K, Devecka M, Maurer T, et al. Impact of Ga-PSMA-PET imaging on target volume definition and guidelines in radiation oncology—a patterns of failure analysis in patients with primary diagnosis of prostate cancer. *Radiat Oncol* 2018; **13**: 36.
- 26 Siva S, Bressel M, Murphy DG, et al. Stereotactic abative body radiotherapy (SABR) for oligometastatic prostate cancer: a prospective clinical trial. *Eur Urol* 2018; **74**: 455–62.
- 27 Ost P, Reynnders D, Decaestecker K, et al. Surveillance or metastasis-directed therapy for oligometastatic prostate cancer recurrence: a prospective, randomized, multicenter phase II trial. *J Clin Oncol* 2018; **36**: 446–53.
- 28 Briganti A, Karnes JR, Da Pozzo LF, et al. Two positive nodes represent a significant cut-off value for cancer specific survival in patients with node positive prostate cancer. A new proposal based on a two-institution experience on 703 consecutive N+ patients treated with radical prostatectomy, extended pelvic lymph node dissection and adjuvant therapy. *Eur Urol* 2009; **55**: 261–70.
- 29 Touijer KA, Karnes RJ, Passoni N, et al. Survival outcomes of men with lymph node-positive prostate cancer after radical prostatectomy: a comparative analysis of different postoperative management strategies. *Eur Urol* 2018; **73**: 890–96.
- 30 Maurer T, Robu S, Schottelius M, et al. Technetium-based prostate-specific membrane antigen-radioguided surgery in recurrent prostate cancer. *Eur Urol* 2019; **75**: 659–66.

# Prostate-specific membrane antigen PET-CT before radical treatment



Michael Hofman and colleagues<sup>1</sup> should be congratulated for their study reported in *The Lancet*, in which men (median age 68.1 years [IQR 63.0–73.5]) with high-risk prostate cancer were randomly assigned to standard imaging (CT and bone scan) or gallium-68 prostate-specific membrane antigen (PSMA) PET-CT. The study had a crossover design, in which men with no more than two unequivocal distant metastases on first-line imaging had second-line imaging from the alternate group. The primary outcome was accuracy of first-line imaging for identifying either pelvic nodal or distant-metastatic disease. PSMA PET-CT had a 27% (95% CI 23–31;  $p < 0.001$ ) greater accuracy than conventional imaging (92% [88–95] vs 65% [60–69]).

87 (29%) of 295 men were found to have either pelvic nodal or distant metastases. First-line PSMA PET-CT resulted in management change in 41 (28%) of 148 men, compared with 23 (15%) of 146 men who received first-line conventional imaging ( $p = 0.008$ ).

The limitations of the study include the way in which metastatic disease was defined, using a predefined reference standard, including histopathology, imaging, and biochemistry at 6-month follow-up. Either one hard or three soft criteria were required. Hard criteria were either histological confirmation or change of a bone lesion to sclerotic or blastic, and were met in only 20 (23%) of 87 men. The soft criteria (change in response to treatment or progression in the absence of treatment) were not conventional criteria, and might have been subject to bias in favour of PSMA PET-CT. Although these criteria reflect a real-world approach, in which men having radiotherapy will not have histological confirmation of nodal disease, some men might have had microscopic disease that was not detected by either modality. Also, some men might have had false-positive findings, which were never further assessed.

Men with high-risk, localised prostate cancer will often benefit from radical treatment, but up to a third subsequently relapse and require additional treatment, either locally or systemically.<sup>2,3</sup> This finding raises the question of whether those men could be identified and offered additional treatment at the outset, or potentially

be spared the local side-effects of radical treatment and opt for systemic therapy alone.

The introduction of new imaging modalities, such as PSMA PET-CT, with improved sensitivity in detecting small-volume metastases, brings both challenges and opportunities. In particular, when men test negative on conventional imaging, and PSMA PET-CT shows small-volume metastatic disease, what should we do? Hofman and colleagues recognised this challenge and should be commended for explicitly acknowledging on the patient information sheet the uncertainty that arises from novel imaging data, and that the effect of any change in management on long-term outcomes is unknown.

Reflecting this uncertainty the authors report that 8/300 men (2.7% [1.1%–5.2%]) underwent radical treatment despite the detection of metastatic disease, which was not considered standard of care at that time.

The traditional paradigm of systemic treatment for metastatic disease, and radical treatment of the primary in localised disease, has largely been based on conventional staging using CT and bone scan. This treatment paradigm has been successfully challenged with data from both the HORRAD<sup>4</sup> and STAMPEDE<sup>5</sup> studies, confirming a 7% overall survival benefit at 3 years for men with low-burden metastatic disease on CT and bone scan, who received radiotherapy to

Published Online  
March 22, 2020  
[https://doi.org/10.1016/S0140-6736\(20\)30527-4](https://doi.org/10.1016/S0140-6736(20)30527-4)  
See Online/Articles  
[https://doi.org/10.1016/S0140-6736\(20\)30314-7](https://doi.org/10.1016/S0140-6736(20)30314-7)



the prostate in addition to standard-of-care systemic treatment, according to a meta-analysis.<sup>6</sup> Several trials are underway to see whether the addition of radical prostatectomy to systemic therapy would give a similar benefit (NCT03655886, NCT03678025).<sup>7</sup>

The availability of radio guided lymph node dissection might provide additional benefit in diagnosing patients with low-volume metastatic disease in pelvic lymph nodes at the time of radical prostatectomy.<sup>8</sup> This availability could also be of benefit in terms of overall survival, although data on lymph node dissection do not show a clear survival advantage.<sup>9</sup>

The introduction of novel imaging into routine practice requires careful assessment of the potential burden to individuals and society, taking into account the resulting changes in treatment. The proPSMA<sup>1</sup> authors have planned an economic analysis of the potential effect of replacing conventional staging with PSMA PET-CT, which will be crucial in assessing the feasibility of widespread use of PSMA PET-CT in men being considered for radical treatment for high-risk prostate cancer.

I have received speaker fees from Janssen and Astellas, proctoring fees from Sonablate, and am an advisory board member for Steba Biotech and Genomic Health.

Caroline Moore

caroline.moore@ucl.ac.uk

Urology Department, University College London, London WC1E 6BT, UK

- 1 Hofman MS, Lawrentschuk N, Francis RJ, et al. Prostate-specific membrane antigen PET-CT in patients with high-risk prostate cancer before curative-intent surgery or radiotherapy (proPSMA): a prospective, randomised, multi-centre study. *Lancet* 2020; published online March 22. [https://doi.org/10.1016/S0140-6736\(20\)30314-7](https://doi.org/10.1016/S0140-6736(20)30314-7).
- 2 Zumsteg ZS, Spratt DE, Romesser PB, et al. The natural history and predictors of outcome following biochemical relapse in the dose escalation era for prostate cancer patients undergoing definitive external beam radiotherapy. *Eur Urol* 2015; **67**: 1009–16.
- 3 Eggener SE, Scardino PT, Walsh PC, et al. Predicting 15-year prostate cancer specific mortality after radical prostatectomy. *J Urol* 2011; **185**: 869–75.
- 4 Boeve LMS, Hulshof MCCM, Vis AN. Effect on survival of androgen deprivation therapy alone compared to androgen deprivation therapy combined with concurrent radiation therapy to the prostate in patients with primary bone metastatic prostate cancer in a prospective randomised clinical trial: data from the HORRAD trial. *Eur Urol* 2019; **75**: 410–18.
- 5 Parker CC, James ND, Brawley CD, et al. Radiotherapy to the primary tumour for newly diagnosed, metastatic prostate cancer (STAMPEDE): a randomised controlled phase 3 trial. *Lancet* 2018; **392**: 2353–66.
- 6 Burdett S, Boevé LM, Ingleby FC, et al. Prostate radiotherapy for metastatic hormone-sensitive prostate cancer: a STPCAP systematic review and meta-analysis. *Eur Urol* 2019; **76**: 115–24.
- 7 Sooriakumaran P. Testing radical prostatectomy in men with prostate cancer and oligometastases to the bone: a randomized controlled feasibility trial. *BJU Int* 2017; **120** (5B): E8–20.
- 8 van Leeuwen FWB, Winter A, van Der Poel HG, et al. Technologies for image-guided surgery for managing lymphatic metastases in prostate cancer. *Nat Rev Urol* 2019; **16**: 159–71.
- 9 Preisser F, van den Bergh RCN, Gandaglia G, et al. Effect of extended pelvic lymph node dissection on oncologic outcomes in patients with D'Amico intermediate and high risk prostate cancer treated with radical prostatectomy: a multi-institutional study. *J Urol* 2020; **203**: 338–43.